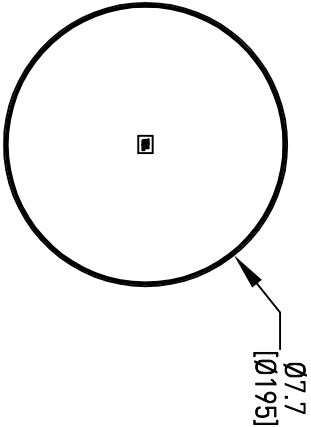
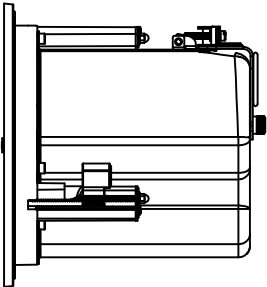
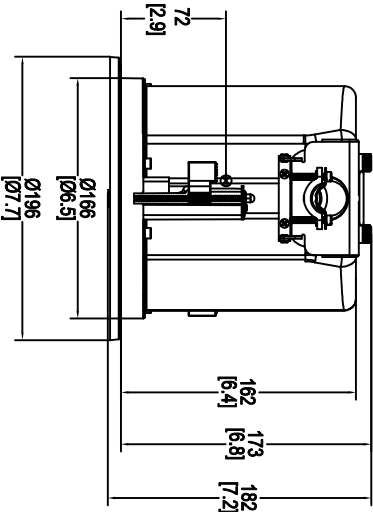
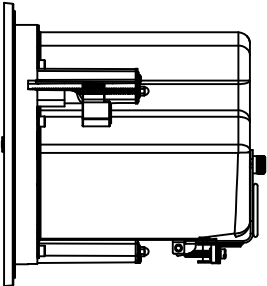
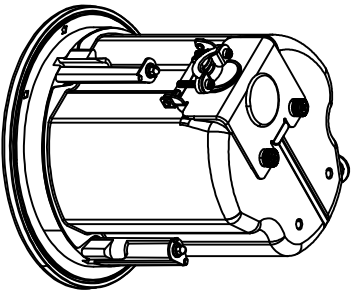
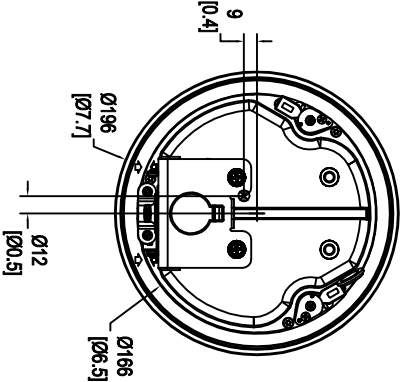


THESE DRAWINGS AND SPECIFICATIONS ARE THE PROPERTY OF JBL INCORPORATED. THEY ARE ISSUED IN STRICT CONFIDENCE AND SHALL NOT BE REPRODUCED OR USED AS THE BASIS FOR MANUFACTURE OR APPARATUS WITHOUT WRITTEN PERMISSION.

ALL MATERIAL SPECIFIED ON THIS DRAWING SHALL CONTINUALLY COMPLY WITH THE EFFECTIVE EU ROHS DIRECTIVE, CURRENTLY 2011/65/EU, INCLUDING ALL AMENDMENTS.

REVISIONS				
LTR	DESCRIPTION	DRFT	DATE	APPR
C	REVISION CHANGE TO C	VM	2/19/2025	



1. CABINET MATERIAL: METAL
2. FINISH: POWDER COATING.
3. WEIGHT: 2.8 KG (6.2 LBS).
4. INPUT CONNECTORS: 2 REMOVABLE LOCKING EURO BLOCK 2-PIN CONNECTOR.
5. GRILLE MATERIAL: METAL.
6. COMPONENTS: COAXIALLY MOUNTED 6.5 INCH WOOFER AND 1 INCH TWEETER.
7. SUSPENSION TYPE (IF APPLICABLE).
8. SYMBOL INDICATES CENTER OF GRAVITY (CG).

NOTES: (UNLESS OTHERWISE SPECIFIED)

TOLERANCES (UNLESS OTHERWISE SPECIFIED)		HARMAN		JBL Professional 8500 Balboa Blvd Northridge, CA 91329 USA	
XXX ± .063 INCH					
XX ± .125 INCH					
ANGULAR TOLERANCE OF 0°-30°					
FRACTIONAL DIMENSIONS ± 1/32		TITLE CUSTOMER DRAWING: C424C/T			
• DIMENSIONS ARE INCHES (MM)					
• ALL DIMENSIONS ARE FINISHED DIMENSIONS					
• DO NOT SCALE DRAWING					
SIZE		DRAWING NO.		REV	
A		10000381214		C	
SCALE		NTS		SHEET 1 OF 1	

SIZE	DRAWING NO.	REV
A	1000381214	C